



MSG-01

MULTI SERVICE GANTRY

Discover the future of heavy load material transportation & handling in the infrastructure industry. Designed to meet the demanding needs of complex projects, the MSG-01 sets new standards in the civil engineering field providing exceptional flexibility and performance.

CUTTING-EDGE DRIVE to Accelerate your Projects

The **4WD drive system** offers optimal traction, guaranteeing

stability and control across different terrains and the most demanding environments.

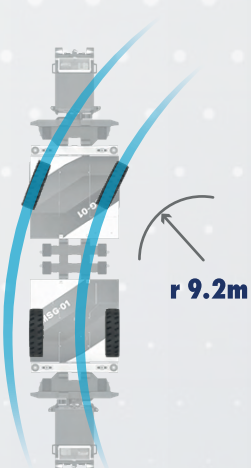
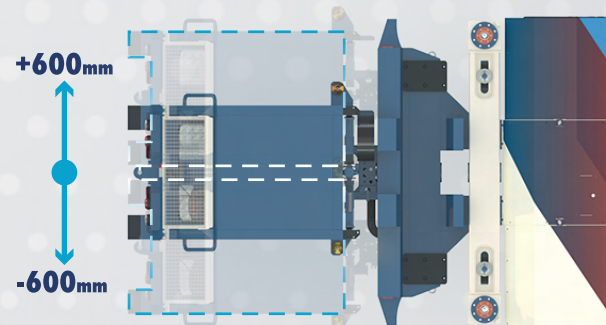
With a remarkable **maximum speed of 7 m/s** and the ability to maintain **3 m/s** even when fully

loaded, the MSG ensures rapid and efficient material transport under **all conditions** and an incredible **17% maximum slope** capacity.

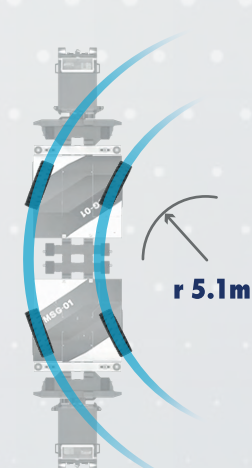


TECHNICAL DATA

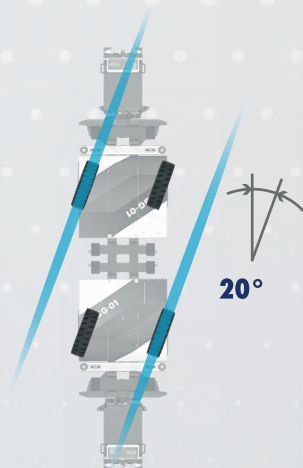
Traction	4WD
Engine Type	Diesel
Power	150 kW
Emission Standard	Stage V
Transmission	Hydraulic
Weight	13,5 ton
Total Capacity	32 ton
MAX Speed Unload	7 m/s
MAX Speed Load	3 m/s
MAX Slope	17%
Length	11,85 m
Width	2,50 m
Height	1,60 m
Single Axis Steering Radius	13 m
Double Axis Steering Radius	6,5 m



SINGLE AXIS



DOUBLE AXIS



PARALLEL

CONTROL VERSATILITY & Pinpoint Precision

Navigate confined spaces with ease thanks to an **excellent handling versatility** providing options for single or double-axis movement and parallel steering mode.

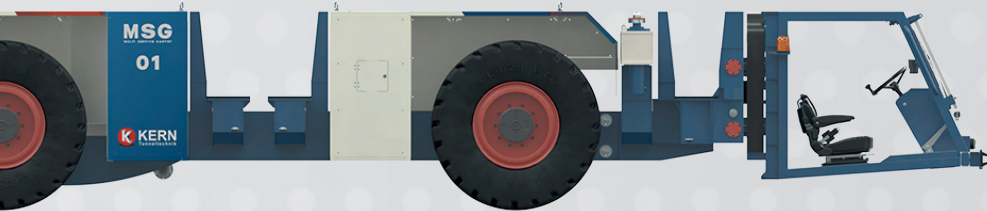
With two drive locations, complete with consoles, and the possibility to operate remotely, the **MSG-01** adapts to your specific operational preferences with a **tailored control environment** and an adjustable cabin that can be moved both vertically and transversally.

eBOOST ⚡ 100% BATTERY POWERED READY

The MSG-01 Can be powered also by our **eBoost** technology, an innovative power source, utilizing **advanced batteries**, ensures **reliable & sustainable energy** for your construction equipment.

This option allows to drastically **reduce CO2 emissions** and the **environmental footprint** while enhancing construction site's operational capabilities. Make a sustainable impact, and drive progress in the industry with this state-of-the-art solution.

eBoost technology not only **lowers emissions** but also **increases efficiency**.

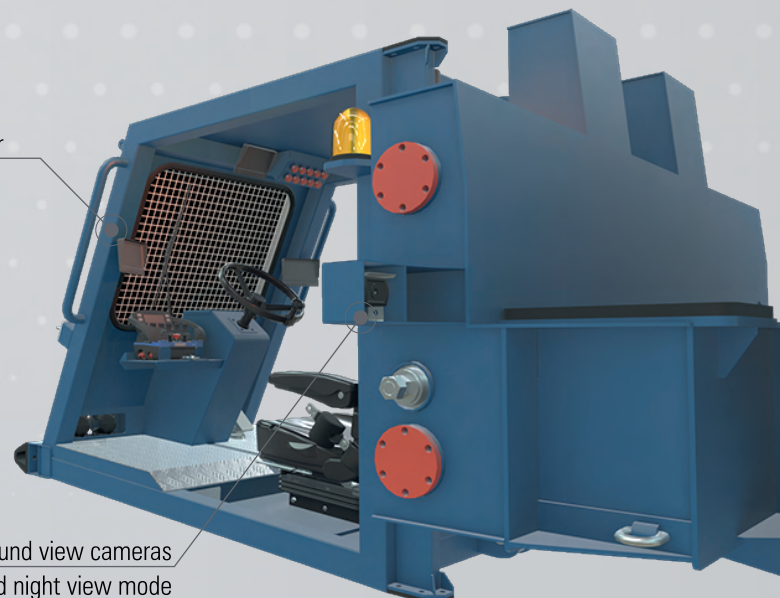


SMART DRIVING Digital Assistant

HD Monitor

6 CAMERA

Surround view cameras
equipped by infrared night view mode



Embrace the Future of **MULTIPLE APPLICATIONS**

From precast segments to construction materials, the MSG-01 and its modular design accommodates bespoke solutions for a wide range of applications within the infrastructure industry such as Tunnelling, Bridges, Roads & Railways and Civils.



» **PRECASTED ELEMENTS**



» **SIDE LOADER TOOLS**



» **PALLET FRAME**



» **LIFTING CRANE**

MSG portfolio includes a wide range of products and tools for material transport and handling such as:

- Culvert cradle
- Precasted Element cradle
- Side Lifter
- Lifting Crane
- Pallet for transport material which includes:
 - IBC tank
 - Membrane rolls
 - Steel reinforcement
 - General material
 - and more



info@kern-tunneltechnik.com



www.kern-tunneltechnik.com



Via Zorzi 4 - 6900 Lugano-Paradiso

